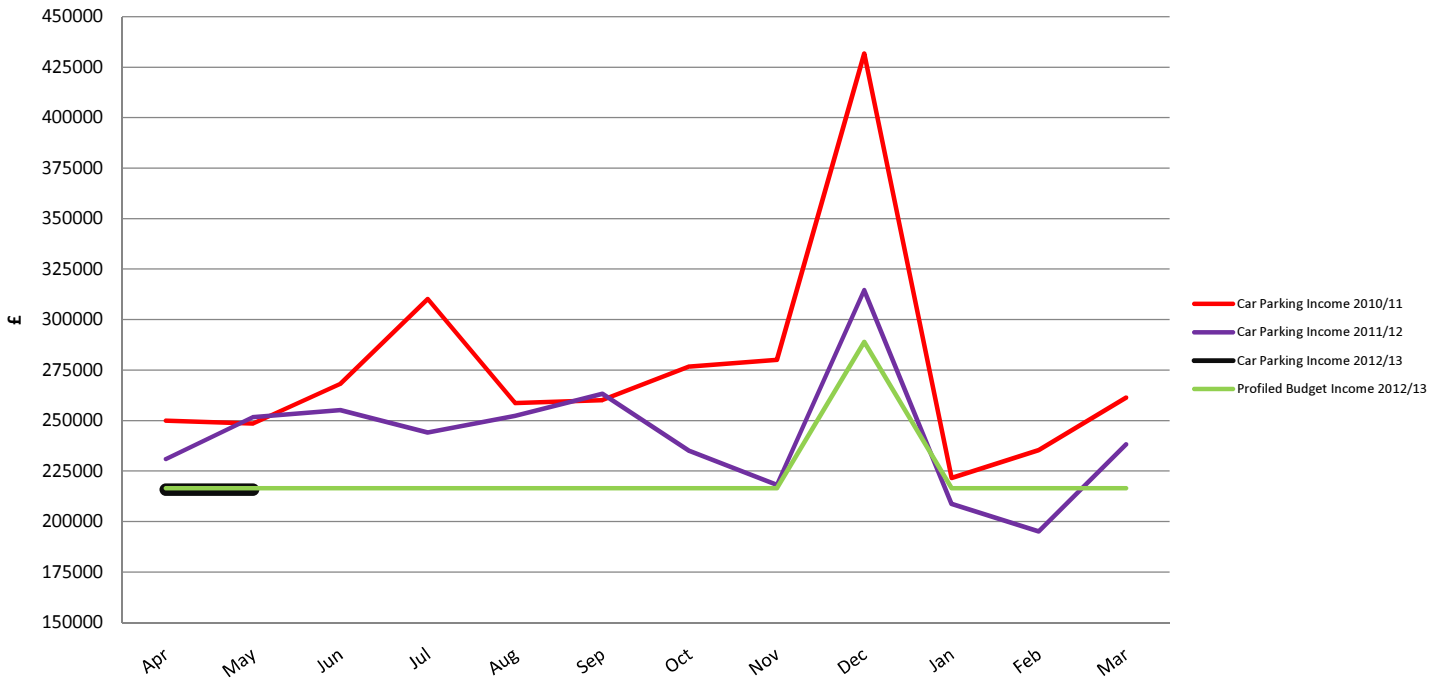
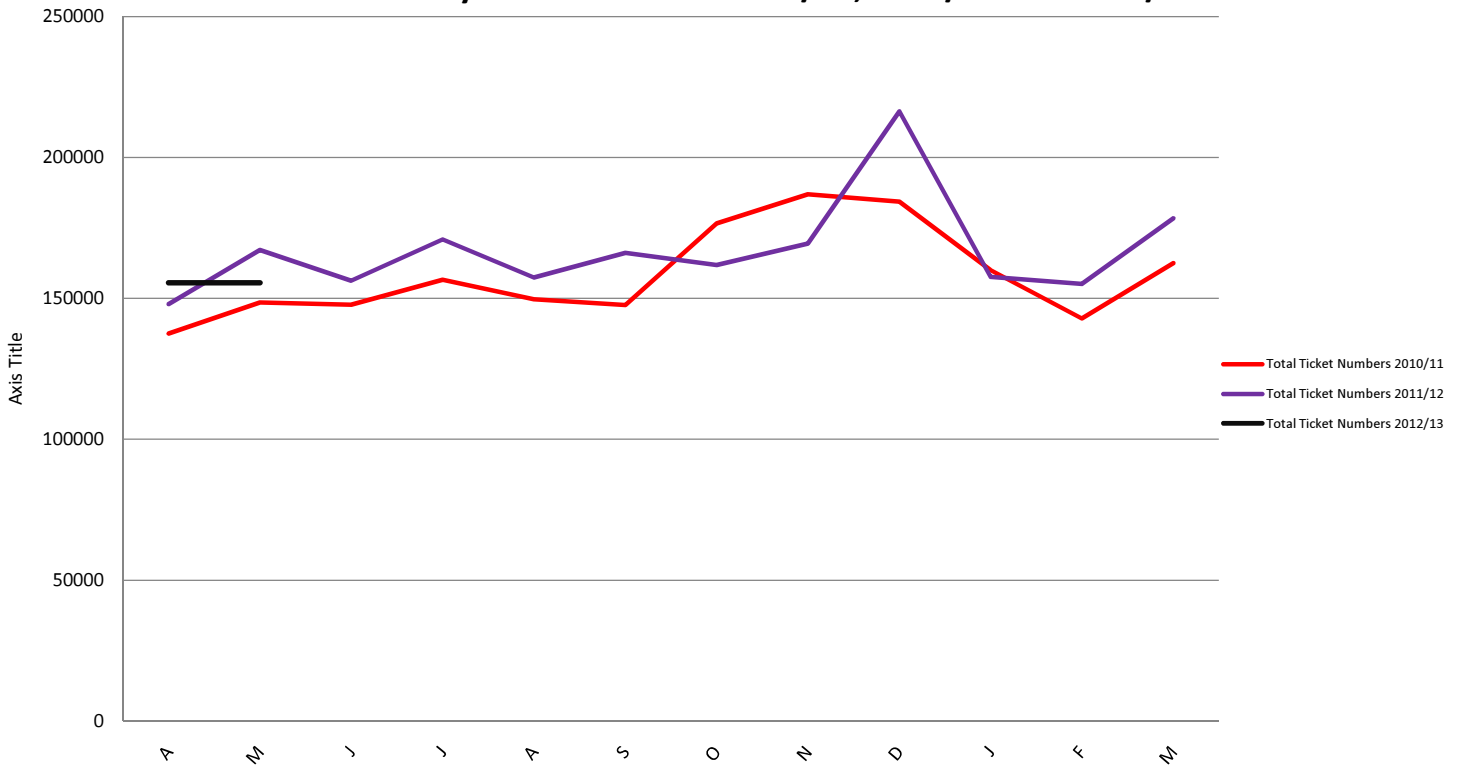


Total Daily Ticket Income 2010/11, 2011/12 and 2012/13



Total Summary Ticket Numbers 2010/11, 2011/12 and 2012/13



The final income figure for daily tickets in 2011/12 is £2,906,909 against a budget of £3,225,978 providing a shortfall of £319,069.

The income received is £24k higher than the estimate of £2,883,000 provided in February.

2011/12 income is £395k less than 2010/11.

The volume of ticket numbers in 2011/12 is 2,004,762 which is 104k higher than 2010/11.

The budget for 12/13 for Car Parking Daily Ticket Income is £2,670,978.